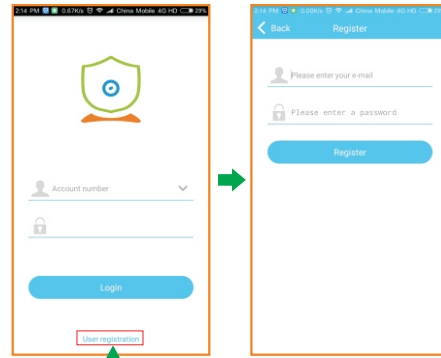


8.2 Account registration

Click the app to enter login interface as show in the right.

User name: (EMAIL)
 Password: (set as you like)
 After setting, please enter the code and click "Register".

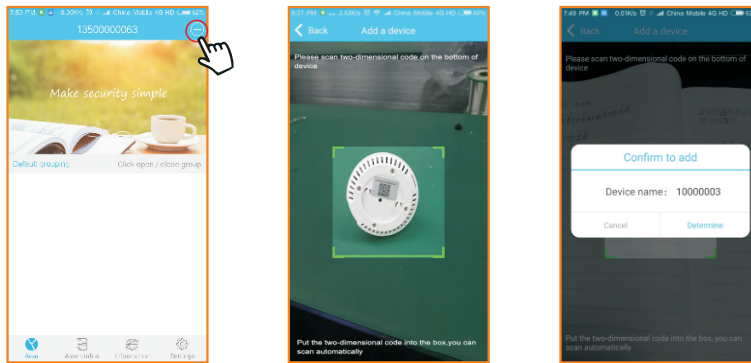
After the registration is successful, the interface will automatically jump to the login interface, and the user clicks on login.



For new users, please click "user registration".

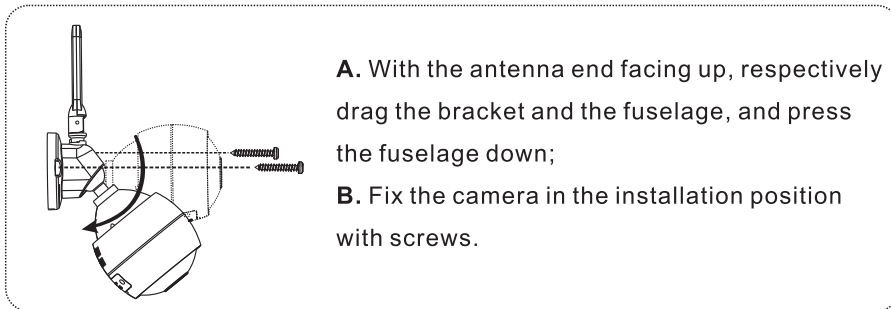
8.3 Add Panel

Click on the login interface to enter the APP main interface. Then, click on the upper right corner of the icon "⊕" to enter the add device interface to scan the QR Code of the back of panel. Scan successfully, pop-up prompt to confirm the add. Finally, click [confirm] to add the panel to the APP main interface.



APP main interface

9. Installation Step

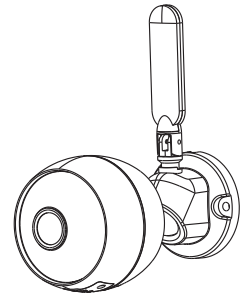


- A. With the antenna end facing up, respectively drag the bracket and the fuselage, and press the fuselage down;
- B. Fix the camera in the installation position with screws.

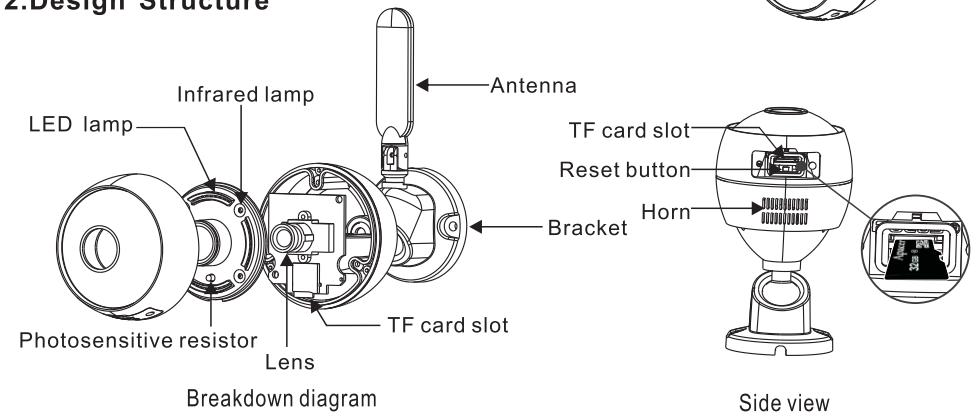
HA-8406 infrared network camera installation instructions

1. Product brief

HA-8406 infrared network camera adopts the embedded Linux operating system and the latest mstar313E hardware platform of Hisilicon. The system has high scheduling efficiency, small size, high stability and reliability. Users can log in to the interface for recording settings through IE browser, CMS client, mobile client, etc. Good waterproof performance, suitable for outdoor places.



2. Design Structure



Exposure distance of infrared lamp: About 5 m

TF card slot: Storage interface. When the TF card is inserted, the side with words is inserted in the direction corresponding to the camera.

Reset button: Restore the factory settings. When using this button, press the small button for 3 seconds with an object similar to the thimble.

Power on: Power up, the LED lights up for 3 seconds, and the voice prompts "System started successfully".

3. Parameters

Operation system: Embedded Linux
User interface: IE browser, Onvif PC client, CMS PC client, phone application
Video format: mainstream 1080P/D1 25fps
 Sub-stream D1/CIF 25fps
Network interface: 10M/100M adaptive network interface
Image sensor: F22, 200W (1920*1080)

Storage interface: TF card, support max 128G (1st time, please format TF card on IE browser interface)
Power: 12V/1A
Installation location: indoor installation
Installation method: ceiling mounting
Size: (Without antenna) $\varnothing 72 * H127.5\text{mm}$
Operating temperature: - 5 to 55 °C

4. Network connection

4.1 Cable network

Connect the power line first, and use the network interface to connect the same router with the computer.

4.2 WiFi network



After connecting cable network, log in IE browser to set WiFi. Once finished, disconnect the cable network.

Notice: keep IP camera and computer in the same segment of IP address.


5. Camera Settings

The IP address of the camera is automatically assigned by the router. Users can obtain the IP address as follows:

- Obtain "intranet search tool" for search at the seller;
 - Log in to the mobile phone APP. (APP download details see "7.Phone Application Settings")
- Log in to the IP address on the web page, as shown in the following figure.

 <http://192.168.1.52/> 

After logging in, the web page displays the download page and downloads as prompted.

After download, right click the icon  to run it as an administrator, Follow the popup prompts to install.

*Notice: before installing the ActiveX, close all IE browsers.
The IP address needs to be retrieved for network reconnection.*

After the software is installed, re-log in the device's IP address on the web page and enter the login page.

As shown in Fig. 1, enter "admin" at the user name, select "English" for the language option, and click "OK" to enter the main interface. Fig. 2.

Reminder: When the device is shipped from the factory, the user name is admin, and the password is empty. Users can directly log in to the main menu. In order to consider the security of the operation of the device, the administrator is required to enter the "user management" item on the "System Settings" page of the system to modify the password of this device.

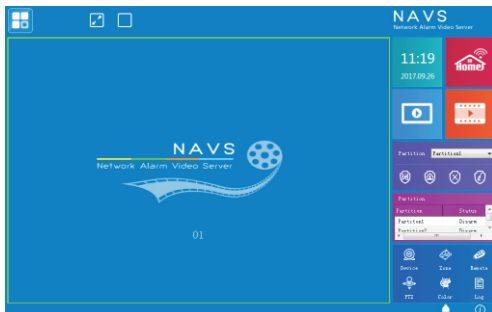


Fig.2



Fig.1

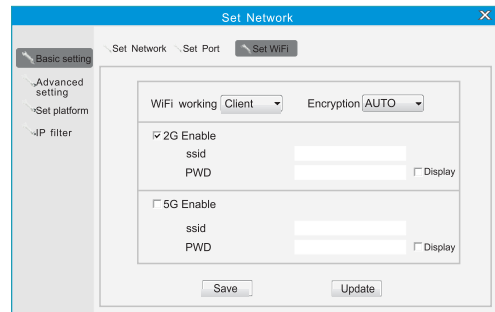


Fig.3

6. Set WiFi in IE interface

After entering IE main interface, click icon  set network<Basic setting<Set WiFi


Encryption mode is "AUTO", select "2G enable" shown in Fig.3. ssid and password are the WiFi name and password respectively. Click "save" and "update" after setting, and the interface will prompt "parameter setting succeeded", then disconnect the network cable and complete WiFi setting. *Note: This machine does not support 5g enable temporarily.*


7. Video viewing and recording

► **Video view:** Right-click on the video display area and the setup item appears. As shown in Fig. 4, the main stream is the video stream of the device. The substream is set to save the traffic during network transmission. Condition selection stream opens the video for viewing.

► **Manual recording:** After opening the video, right-click to select "Start Recording" to start recording, and right-click "Stop Recording" to end the recording.

► **Timed recording/alarm recording:**

Click on the main menu icon  to select "video setting" - "record schedule". The user will set according to the actual situation. The alarm recording will only be recorded if the alarm is triggered within the set time period.

► **Motion Detection:** Click on the main menu icon  to select "Alarm Settings" - "Device Alarm Settings" - "Motion Detection". When there is a change in the screen, if someone walks past and the lens is moved, the system will automatically record according to the settings.

- Tips:
- If a scheduled recording is set in the time period, manual recording will not work during this period of time.
 - The default recording is stored in the D drive of the computer. When recording manually, the folder where the video is recorded will be prompted.

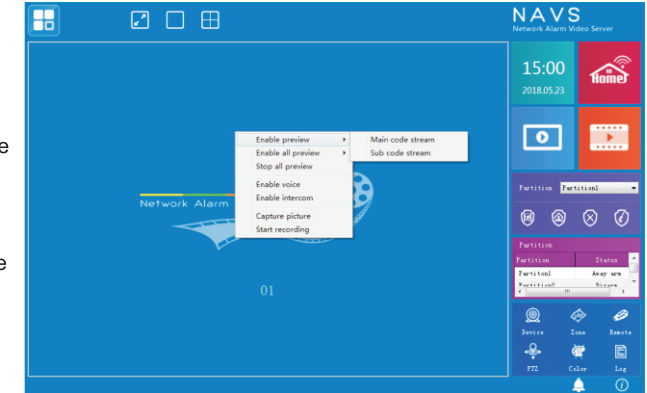


Fig.4

8. Phone Application Settings

8.1 Download and Installation

Please scan the QR code below to download and install.



Android



iPhone

Click the icon below to enter settings.

